

CMIP3233-S

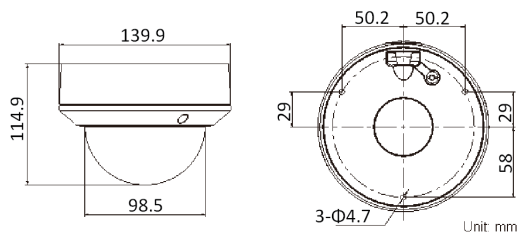
3.0MP VF IR Dome Network Camera



Key features

- 3 megapixel (2048 x 1536) high resolution
- Full HD1080p real-time video
- IR LEDs: up to 100ft(about 30m)
- DWDR & 3D DNR & BLC
- 3-Axis
- Onboard storage (up to 64GB)
- Audio I/O, Alarm I/O
- IP66
- Vandal-proof

Dimensions



CMIP3233-S	
Camera	
Image sensor	1/3" sensor
Min. illumination	0.1 lux@F1.4, AGC on 0 lux with IR
Shutter time	1/25s ~ 1/100,000s
Lens	2.8 ~ 12mm @ F1.4, Angle of view: 80° ~ 27.2°
Lens mount	Φ14
Auto iris	DC drive
Day & night	ICR
Digital noise reduction	3D DNR
Wide dynamic range	Digital WDR
Backlight compensation	Yes,zone configurable
Angle adjustment	Pan: 0° ~ 360° , tile: 0° ~ 75° , rotation: 0° ~ 360°
Compression standard	
Video compression	H.264 / MJPEG
H.264 compression profile	Main profile
Bit rate	32 Kbps ~ 16 Mbps
Audio compression	G.711 / G.726
Audio bit rate	64Kbps (G.711) / 16Kbps (G.726)
Image	
Max. image resolution	2048 × 1536
Frame rate	60Hz: 20fps (2048 x 1536), 30fps (1920 × 1080), 30fps (1280 x 720) 50Hz: 20fps (2048 x 1536), 25fps (1920 × 1080), 25fps (1280 x 720)
Image settings	Saturation, brightness, contrast adjustable through client software or web browser
Network	
Network storage	NAS (iSCSI optional)
Alarm trigger	Motion detection.tampering alarm
Protocols	TCP/IP, HTTP, DHCP, DNS, DDNS, RTP, RTSP, PPPoE, SMTP, NTP, SNMP, HTTPS, FTP, 802.1x, Qos, UPnP (SIP, SRTP, IPv6 optional)
System compatibility	ONVIF, PSIA, CGI
General functionalities	Dual stream, huser authentication, watermark
Interface	
Communication interface	1 RJ45 10M / 100M ethernet port
On-board storage	Built-in Micro SD card slot, up to 64 GB
General	
Operating conditions	-22 ° F ~ 140 ° F(-30 ° C ~ 60 ° C), humidity 95% or less (non-condensing)
Power supply	DC12V ± 10%, PoE (802.3af)
Power consumption	Max. 5.5W
Impact protection	IEC60068-2-75Eh, 50J; EN50102, up to IK10
Ingress protection level	IP66
IR range	Up to 100ft(About 30m)
Dimensions	Φ5.5"×4.5"(139.9 x 114.9mm)
Weight	2.20lbs(1000g)