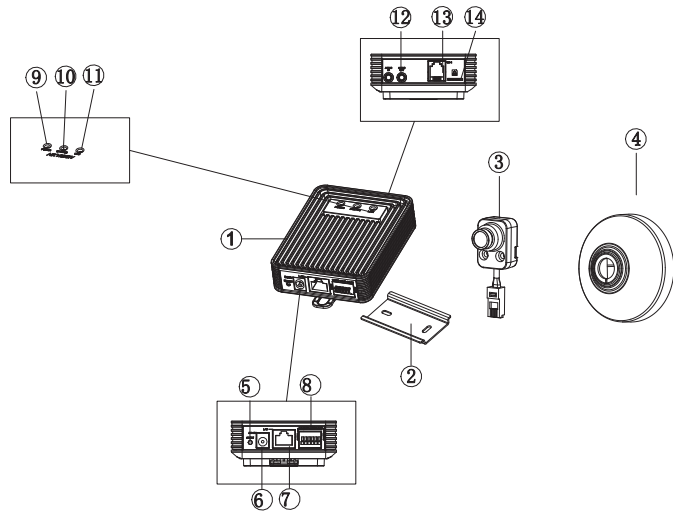


People Counting Network Camera

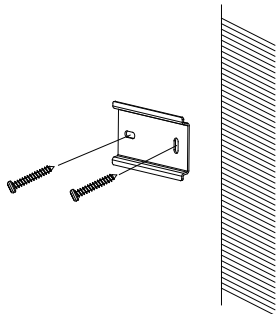
Quick Installation Guide



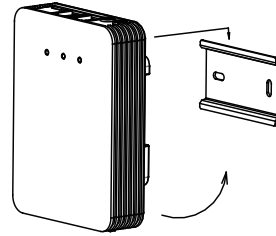
No.	Description	No.	Description
1	Main Unit	8	RS232/Alarm Interface
2	Mounting Rail	9	Power Indicator LED
3	Covert Camera	10	Status Indicator LED
4	Decorative Cover	11	Link Indicator Led
5	RESET Button	12	Audio Interface
6	Power Interface	13	RJ-12 Interface
7	Ethernet interface	14	Micro SD Card Slot

Installation Steps:

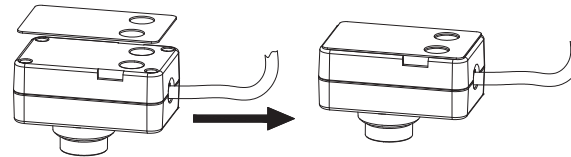
1. Fix the standard mounting rail on the mounting surface.



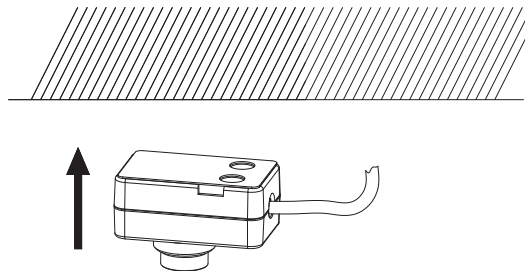
2. Hang the hook which is on upper-side of the main unit onto the rail, press a little harder on the lower part of the main unit, and then the elastic clasp will be automatically buckled.



3. Place the double-sided adhesive tape on the back of lens unit.

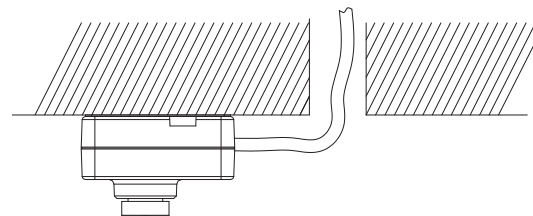


4. Affix it to the ceiling.

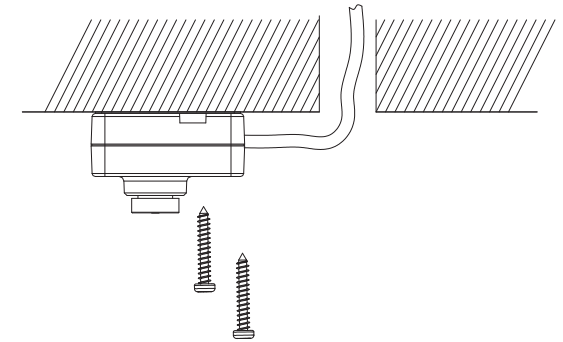


Please note that the lens direction should be in accordance with the direction of traffic.

5. Drill a hole with diameter of 18mm on the ceiling surface.

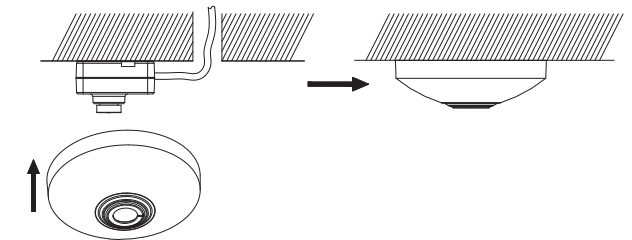


6. Attach the screws to finish the lens installation



Please note that it is important to keep the lens clean when drilling holes or inserting the screws.

7. After the lens is affixed, attach the lens cover on the unit.



Please note that the camera should be centered above the entrance/exit door.

And it is also recommended that you position the camera as close as possible to the doorway without any obstacles.

For detailed instructions of further configuration, please refer to the user manual of network camera.