

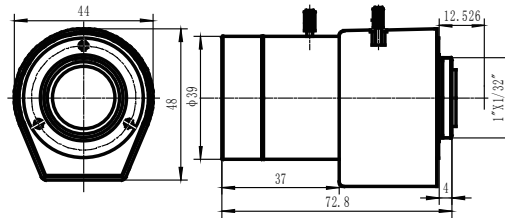
2MP 5-100mm CS DC Iris Lens LTL510011



Key Features:

- 5-100mm
- CS Mount
- 1/3"
- Auto Iris

Dimensions:



2MP 5-100mm CS DC Iris Lens

LTL510011

SPECIFICATION	
Focal-Length	5-100mm
Maximum Aperture	F1.6
Dimension	39x72.8mm
Back focal length	6.8-17.88
Image Format	1/3"
M.O.D.	0.3m
FOCUS	MANUAL
IRIS	DC IRIS
Angle of View	76.2° -3.4°
Operating humidity range	30%-70%
Operating temperature range	14° F - 113° F (-10° C - 45° C)
Weight	0.4lb(180g)