



333 Bayview Avenue Amityville, New York 11701
 For Sales and Repairs, (800) 645-9445
 For Technical Service, (800) 645-9440 or visit us at
<http://tech.napcosecurity.com/>
 (Note: Technical Service is for security professionals only)
 Publicly traded on NASDAQ Symbol: NSSC
 © NAPCO 2018



GEM-TRANSLP

Low Profile Window / Door Transmitter

INSTALLATION INSTRUCTIONS

WI1667DLF 10/18

GENERAL DESCRIPTION

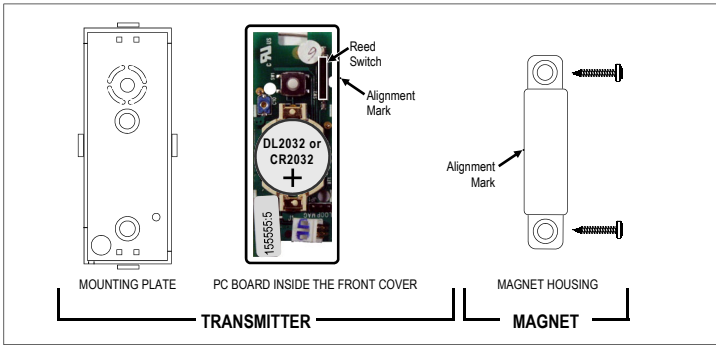


Fig. 1. GEM-TRANSLP Component Parts

The **GEM-TRANSLP** is a low profile window/door transmitter designed for use in Napco GEM-series wireless systems. When used with the supplied magnet, the transmitter functions as a window/door sensor. However, plug-in wires are provided for normally-closed external contacts so that additional devices may be used in conjunction with (or instead of) the internal reed switch. An internal jumper header can be positioned for selecting the optional normally-closed external contact(s) and/or the internal reed switch. The GEM-TRANSLP is powered by a 3-volt lithium battery cell (Energizer CR2032 or Duracell DL2032), that powers the transmitter for up to 5 years. When cell voltage drops below normal, a low-battery report will be sent to the receiver.

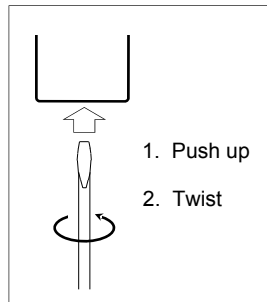


Fig. 2. Opening the case

INSTALLATION

Notes: The transmitter and magnet may be mounted in any position with no degradation in performance. Thus, if a left-handed reed switch is required, the unit may be mounted upside down. However, for reference purposes in this text, the transmitter will be considered oriented with the reed switch at the top, as shown in Fig. 1. The PC board is factory installed in the transmitter front cover **and must not be removed**. A raised alignment mark on the transmitter front cover indicates the location of the reed switch on the PC board. There is also an alignment mark on the plastic magnet housing.

- Open the case.** Remove the GEM-TRANSLP transmitter cover from its mounting plate by inserting a small screwdriver into either slot; twist while applying upward pressure. See Fig. 2.
- Insert the battery cell.** Observe polarity; install the cell with the positive (+) terminal facing up. With the positive (+) terminal facing up, press the cell into its holder. **Do not insert upside down.**
- Select transmitter location.** Avoid mounting the transmitter near the floor. Low level mounting can reduce transmission range and may subject the transmitter to damage.
- Install transmitter mounting plate and magnet.** Use #6 flat-head screws or double-sided tape (supplied) to secure. If using internal magnetic reed switch, observe reed switch alignment marks on both the transmitter cover and magnet housing. Mount magnet within 5/8" of the transmitter front cover. If only the internal reed switch is to be used, skip to Step 6. If mounting the magnet with the double-sided tape, mounting plate tabs may be removed—**use a utility knife only—do not bend** (see Fig. 3).
- (For external contacts only).** Mount the contact or sensor as described in its instructions. For recessed wiring, carefully drill an access hole for the wires. Insert wire plug into receptacle on PC

board. Curl wires inside case to avoid pinching wires (see Fig. 4); connect two wires to an external sensor having normally-closed contacts (or a normally-closed loop). Set Jumper J1 to "LOOP".

- Set Jumper.** If using only external contacts, set Jumper J1 to "LOOP". If using both internal reed switch *and* external contacts, remove Jumper J1. If using only internal reed switch, set Jumper J1 to "MAG". See table below.
- Close the transmitter case.** Close case by engaging the retaining tabs at either end, then snapping the front cover to the mounting plate. Be careful not to pinch wire harness (if used).
- Program the panel.** Each transmitter has a unique factory-programmed ID code that distinguishes itself to the receiver. Enter the following:

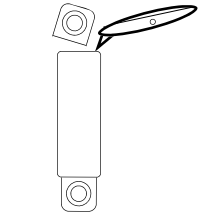


Fig. 3. Remove mounting plate tabs with utility knife only.

(a) if needed, enter the zone number to which the transmitter will be mapped (for example, for Zone 1, enter "01");

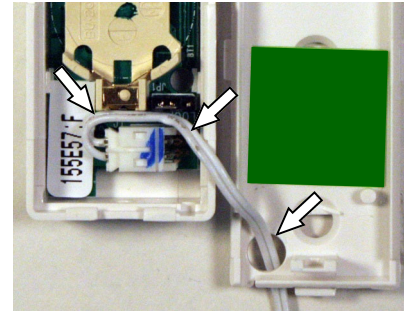


Fig. 4. Curl plug wires inside case to avoid pinching wires. Use hole in Mounting Plate. The ID Code on the sticker is "155E57:F".

- (b) all 7 characters on the sticker. Using the Fig. 4 example sticker, enter "155E57F" (no need to enter the colon character);
- (c) the wireless point number (enter "1" for supervised, "9" for unsupervised). If needed, see the control panel programming instructions; ensure ALL numbers and/or letters are entered.

WIRING OPTIONS

Wire in any of the configurations shown in the following table:

OPTION	JP1 SETTING	FUNCTION	DIAGRAM
1.		"LOOP": External contact enabled for point 1; magnetic internal contact (reed switch) disabled.	 N/C external contact on point 1 ("LOOP")
2.		JUMPER REMOVED: External contact enabled for point 1 and magnetic internal contact (reed switch) enabled for point 1.	 Jumper removed to enable BOTH N/C external and N/C internal contacts on point 1
3.		"MAG": Magnetic internal contact (reed switch) enabled for point 1; external contact disabled.	 Magnetic reed switch only N/C internal contact on point 1 ("MAG")

Caution: Changes or Modifications not approved by NAPCO may void the user's authority to operate the equipment. This device may not cause interference. This device must accept any interference, including interference that may cause undesired operation of the device.

Note: For a replacement wire harness, order part # W978.

NAPCO LIMITED WARRANTY



NAPCO SECURITY TECHNOLOGIES, INC. (NAPCO) warrants its products to be free from manufacturing defects in materials and workmanship for *thirty-six months* following the date of manufacture. NAPCO will, within said period, at its option, repair or replace any product

failing to operate correctly without charge to the original purchaser or user.

This warranty shall not apply to any equipment, or any part thereof, which has been repaired by others, improperly installed, improperly used, abused, altered, damaged, subjected to acts of God, or on which any serial numbers have been altered, defaced or removed. Seller will not be responsible for any dismantling or reinstallation charges.

THERE ARE NO WARRANTIES, EXPRESS OR IMPLIED, WHICH EXTEND BEYOND THE DESCRIPTION ON THE FACE HEREOF. THERE IS NO EXPRESS OR IMPLIED WARRANTY OF MERCHANT ABILITY OR A WARRANTY OF FITNESS FOR A PARTICULAR PURPOSE. ADDITIONALLY, THIS WARRANTY IS IN LIEU OF ALL OTHER OBLIGATIONS OR LIABILITIES ON THE PART OF NAPCO.

Any action for breach of warranty, including but not limited to any implied warranty of merchant ability, must be brought within the six months following the end of the warranty period.

IN NO CASE SHALL NAPCO BE LIABLE TO ANYONE FOR ANY CONSEQUENTIAL OR INCIDENTAL DAMAGES FOR BREACH OF THIS OR ANY OTHER WARRANTY, EXPRESS OR IMPLIED, EVEN IF THE LOSS OR DAMAGE IS CAUSED BY THE SELLER'S OWN NEGLIGENCE OR FAULT.

In case of defect, contact the security professional who installed and maintains your security system. In order to exercise the warranty, the product must be returned by the security professional, shipping costs prepaid and insured to NAPCO. After repair or replacement, NAPCO assumes the cost of returning products under warranty. NAPCO shall have no obligation under this warranty, or otherwise, if the product has been repaired by others, improperly installed, improperly used, abused, altered, damaged, subjected to accident, nuisance, flood, fire or acts of God, or on which any serial numbers have been altered, defaced or removed. NAPCO will not be responsible for any dismantling, reassembly or reinstallation charges.

This warranty contains the entire warranty. It is the sole warranty and any prior agreements or representations,

whether oral or written, are either merged herein or are expressly canceled. NAPCO neither assumes, nor authorizes any other person purporting to act on its behalf to modify, to change, or to assume for it, any other warranty or liability concerning its products. In no event shall NAPCO be liable for an amount in excess of NAPCO's original selling price of the product, for any loss or damage, whether direct, indirect, incidental, consequential, or otherwise arising out of any failure of the product. Seller's warranty, as herein above set forth, shall not be enlarged, diminished or affected by and no obligation or liability shall arise or grow out of Seller's rendering of technical advice or service in connection with Buyer's order of the goods furnished thereunder.

NAPCO RECOMMENDS THAT THE ENTIRE SYSTEM BE COMPLETELY TESTED WEEKLY.

Warning: Despite frequent testing, and due to, but not limited to, any or all of the following; criminal tampering, electrical or communications disruption, it is possible for the system to fail to perform as expected. NAPCO does not represent that the product/system may not be compromised or circumvented; or that the product or system will prevent any personal injury or property loss by burglary, robbery, fire or otherwise; nor that the product or system will in all cases provide adequate warning or protection. A properly installed and maintained alarm may only reduce risk of burglary, robbery, fire or otherwise but it is not insurance or a guarantee that these events will not occur. CONSEQUENTLY, SELLER SHALL HAVE NO LIABILITY FOR ANY PERSONAL INJURY, PROPERTY DAMAGE, OR OTHER LOSS BASED ON A CLAIM THE PRODUCT FAILED TO GIVE WARNING. Therefore, the installer should in turn advise the consumer to take any and all precautions for his or her safety including, but not limited to, fleeing the premises and calling police or fire department, in order to mitigate the possibilities of harm and/or damage.

NAPCO is not an insurer of either the property or safety of the user's family or employees, and limits its liability for any loss or damage including incidental or consequential damages to NAPCO's original selling price of the product regardless of the cause of such loss or damage.

Some states do not allow limitations on how long an implied warranty lasts or do not allow the exclusion or limitation of incidental or consequential damages, or differentiate in their treatment of limitations of liability for ordinary or gross negligence, so the above limitations or exclusions may not apply to you. This Warranty gives you specific legal rights and you may also have other rights which vary from state to state.

This device complies with Part 15 of the FCC Rules. Operation is subject to the following two conditions: (1) this device may not cause harmful interference, and (2) this device must accept any interference received, including interference that may cause undesired operation. **Caution:** Changes or modifications not expressly approved by manufacturer could void the user's authority to operate the equipment. **FCC ID:** AD8-GEMTRANSLP; **IC:** 596A-GEMTRANSLP