

NVR-P8/8P-2VA



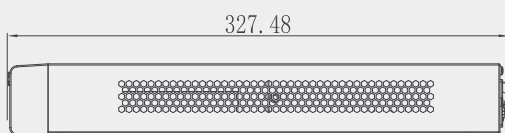
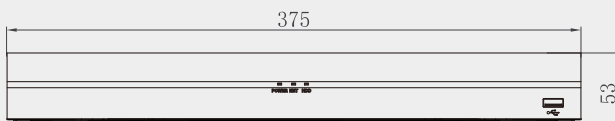
8 Channel 1U 8PoE 4K&H.265 Lite Network Video Recorder



Features

- H.265/H.264 codec decoding
- Max 200Mbps Incoming Bandwidth
- Up to 8MP Resolution for Preview and Playback
- HDMI/VGA simultaneous video output
- Support IPC UPnP, 8PoE ports
- Support ANR technology to enhance the storage reliability when the network break down

Dimensions(mm)



System Overview

The NVR is the first Lite series NVRs which can support 4K and H.265. And, it has the most reasonable price and best quality. This Lite NVR provides up to 8MP resolution. For applications where details are critical for identification, it provides a powerful image performance with up to 4K resolution. Additionally, the NVR features a mouse shortcut operation menu, remote management and control, centre storage, edge storage, and back up storage.

Designed as a cost-effective, easy installation, this NVR is ideal for a wide range of applications such as public safety, water conservancy, transportation, city centers, education, and financial institutions.

The NVR is compatible with numerous third-party devices making it the perfect solution for surveillance systems with or without a video management system (VMS). Its open architecture supports multi-user access and is compatible with ONVIF 2.4, enabling interoperability when combined with IP cameras.

Functions

4K Resolution

The NVR supports 4K ultra HD resolution (3840 x 2160) for recording, live viewing and playback.

Intelligent Video System (Optional)

Working with built-in intelligent video analytics IP cameras, the NVR has the ability to detect and analyze moving objects for improved video surveillance. The NVR provides optional standard intelligence at the edge allowing detection of multiple object behaviors such as abandoned or missing objects. IVS also supports Tripwire analytics, allowing the camera to detect when a pre-determined line has been crossed, People Counting, ideal for business intelligence, and Face Detection, for searching or identification of individuals.

Smart Add

With the Smart Add function, the installation of IP system is as easy as an analog system, no matter the NVR with or without a PoE switch embedded. It should be noted that the NVR has to be in the same router as cameras.

ANR (Automatic Network Replenishment Technology)

Video record in SD card in IP cameras when the network breaks down, and after the network recovered, the video will be transferred to NVR and then recorded in it.



NVR-P8/8P-2VA



Technical Specification	
System	
Main Processor	Quad-core embedded processor
Operating System	Embedded LINUX
Display	
Interface	1 HDMI, 1 VGA
Resolution	3840×2160, 1920×1080, 1280×1024, 1280×720, 1024×768
Multi-screen Display	1/4/8/9
OSD	Camera title, Time, Video loss, Camera lock, Motion detection, Recording
Video Detection and Alarm	
Trigger Events	Recording, PTZ, Tour, Alarm out, Video Push, Email, FTP, Snapshot, Buzzer & Screen tips
Video Detection	Motion Detection, MD Zones: 396(22×18), Video Loss & Tampering
Alarm input	4 Channel, Low Level Effective, Green Terminal Interface
Relay Output	2 Channel, NO/NC Programmable, Green Terminal Interface
Playback and Backup	
Playback	1/4/8
Search Mode	Time/Date, Alarm, MD & Exact search (accurate to second), Smart search
Playback Function	Play, Pause, Stop, Rewind, Fast play, Slow Play, Next File, Previous File, Next Camera, Previous Camera, Full Screen, Repeat, Shuffle, Backup Selection, Digital Zoom
Backup Mode	USB Device/Network
Storage	
Internal HDD	2 SATA III Port, Up to 6 TB capacity for each HDD
HDD Mode	Single
eSATA	N/A
Auxiliary Interface	
USB	2 USB Ports (1 USB2.0, 1 USB3.0)
RS232	N/A
RS485	N/A
Third-party Support	
Third-party Support	Arecont Vision, AXIS, Bosch, Brickcom, Canon, CP Plus, Dynacolor, Honeywell, Panasonic, Pelco, Samsung, Sanyo, Sony, Videotec, and more

Audio and Video	
IP Camera Input	8 Channel
Two-way Talk	1 Channel Input, 1 Channel Output, RCA
Recording	
Compression	H.265/H.264
Resolution	8Mp/ 6Mp/ 5Mp/ 4Mp/ 3Mp/ 1080P/ 1.3MP/ 720P etc.
Record Rate	200Mbps
Bit Rate	16Kbps ~ 20Mbps Per Channel
Record Mode	Manual, Schedule (Regular, Continuous), MD (Video detection: Motion Detection, Tampering, Video Loss), Stop
Record Interval	1 ~ 120 min (default: 60 min), Pre-record: 1 ~ 30 sec, Post-record: 10 ~ 300 sec
Network	
Interface	1 RJ-45 Port (10/100/1000Mbps)
Ethernet Port	1 Independent 1000Mbps Ethernet Port
PoE	8 ports (IEEE802.3at/af)
Network Function	HTTP, HTTPS, TCP/IP, IPv4/IPv6, UPnP, RTSP, UDP, SMTP, NTP, DHCP, DNS, IP Filter, PPPoE, DDNS, FTP, IP Search
Max. User Access	128 users
Smart Phone	iPhone, iPad, Android
Interoperability	ONVIF 2.4, CGI Conformant
Electrical	
Power Supply	AC100V ~ 240V, 50 ~ 60 Hz
Power Consumption	NVR: <9.6W (Without HDD)
	PoE: Max 25.5w for single port, 80w in total
Environmental	
Operating Conditions	-10°C ~ +55°C (+14°F ~ +131°F), 86 ~ 106kpa
Storage Conditions	-20°C ~ +70°C (-4°F ~ +158°F), 0 ~ 90% RH
Construction	
Dimensions	1U, 375mm×327.5mm×53mm (14.8" x 12.9" x 2.1")
Net Weight	2.6kg (5.7lb) (without HDD)
Gross Weight	4kg(8.8lb)(without HDD)
Certifications	
CE	EN55032, EN55024, EN50130-4, EN60950-1
FCC	Part 15 Subpart B, ANSI C63.4-2014
UL	UL60950-1+CAN/CSA C22.2 No.60950-1