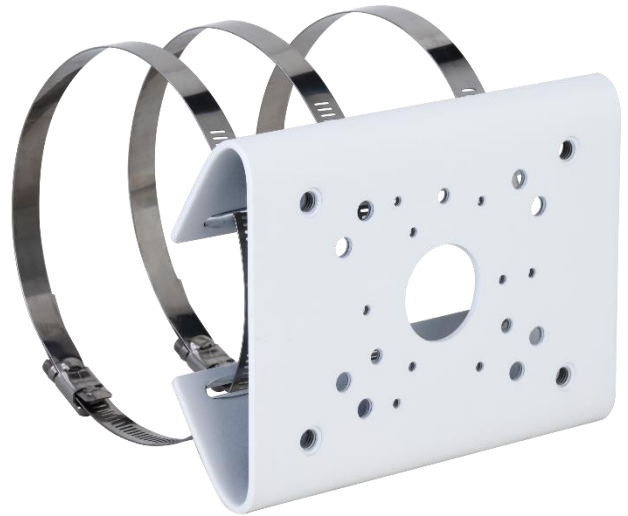


## *Pole Mount Bracket*

# LXPM02



### Key Features

- SECC & SUS304 pole mount bracket
- White color
- Sustains a maximum load capacity of 22.05lb
- Easy installation

# Specification

LXPM02

Accessory	
Weight	1.1kg(2.43lb)
Load Bearing	10.0kg(22.05lb)
Material	SECC & SUS304
Appearance	White
Dimension(WxHxD)	130.4mm x 170mm x 45mm (5.13" x 6.69" x 1.77")
Mast Diameter	Φ80 ~ 150m (Φ3.15"~ 5.91")
Pipe Thread	N/A

## Dimensions (mm[inch])

