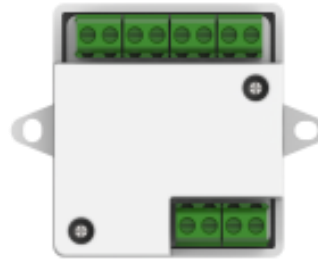


LTH-SM1 RS-485 Secure Module



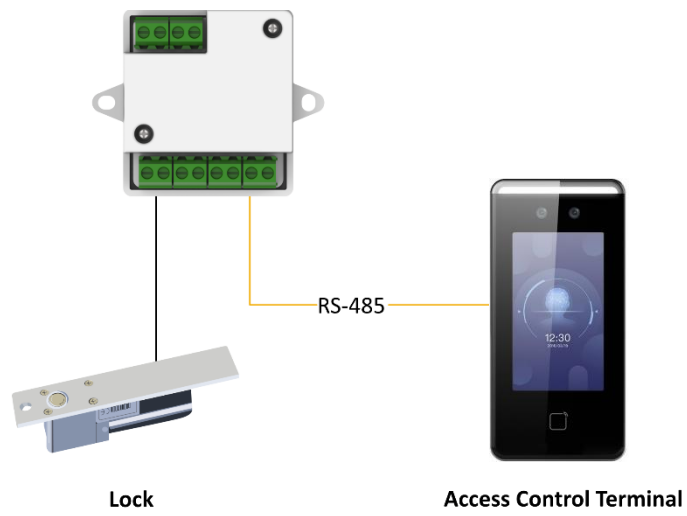
LTH-SM1 RS-485 Secure Module is the interlayer between the access control terminal and the lock, which prevents trespassers entering your property by destroying the outdoor terminal and shorting the lock control circuit.

- Communicates with the access control terminal via RS-485 to execute the commands from the terminal including unlock, lock, remain lock and remain unlock.
- Optional: collects the door magnetic signal and the exit button signal and send them to the access control terminal.

▪ Specification

Interface	
Lock control	1
Exit button	1
Door contact input	1
RS-485	1
General	
Power supply	12 VDC
Power consumption	3 W
Working temperature	-22° F to 140° F
Working humidity	0% to 90%
Dimensions	2.1" × 1.7" × 0.6"

▪ Typical Application



▪ Physical Interface

No.	Description
1	Power Input
2	Exit Button
3	Lock
4	Door Contact
5	RS-485

